

# Help Contents

## Overview

[Introducing The ReVoL Web Worker](#)  
[What's New In Version 1.2 ?](#)  
[Coming Soon !](#)  
[License agreement](#)  
[Why register ?](#)  
[Registration form](#)  
[ReVoL Web Worker FAQ](#)  
[The HyperText Markup Language \(HTML\)](#)  
[HTML Tag Levels](#)

## Using ReVoL Web Worker

[Building HTML in ReVoL](#)  
[Using the tool bar](#)  
[Using the right mouse button](#)  
[Using ReVoL Wizards](#)  
[Using custom tags](#)  
[Using ReVoL Web View Mode](#)  
[What is the ReVoL Web Viewer ?](#)  
[Setting options within ReVoL](#)  
[How to insert HTML tags](#)  
[How to turn a text document into a web page in 1 minute](#)

## Menu Commands

[File Menu](#)  
[Edit Menu](#)  
[View Menu](#)  
[Insert Menu](#)  
[Options Menu](#)  
[Tools Menu](#)  
[Window Menu](#)  
[Help Menu](#)

## Meet The Author

[About the author](#)

## Registering your copy



### A word from the author

The ReVoL Web Worker V1.2 is the first shareware release of this program. I have decided to release this version as shareware, because I am trying to raise enough money to buy some OCX add on files, to provide a spell checker and additional graphical handling. All money raised from the registration of this program will go directly into the development and enhancement of future versions. I only ask that you register this program once, after which you will receive a free upgrade to a registered version of all future releases of the ReVoL Web Worker, without exception. I hope that you will register and continue to use ReVoL . I have released this version as a fully functioning program, because I really do not like shareware programs that bombard you with nag screens at every opportunity, or are so crippled that most of the features that you want to use are not enabled. I understand that downloading software can be expensive, in terms of the cost of telephone calls, and that many shareware distributors charge hefty copying and administration fees, increasing the cost of obtaining shareware. Hopefully you obtained this copy from a magazine cover disk or a painless download.

In light of all this I decided to release this version in its entire form. I hope that this does not stop you from registering your copy if you find it useful. Many people have told me that I should cripple this software in order to make the registration more inviting, but I do not agree. I believe that the shareware system should be based on trust, and this trust starts with the software developer. I hope that you do not prove me wrong.

### Registration benefits

If you register this software you will receive a code which will remove the startup nag screen and upgrade your version to registered. As each new version of the ReVoL Web Worker is released, you will be entitled to a free upgrade. This free upgrade covers all future versions, so a one off payment, will ensure that you have a registered up to date editor, at all times. How many shareware programs offer this ? All registration payments will be used solely, to enhance the functionality of future versions, through OCX add on controls and other methods. I have many exciting features planned for future releases, (and remember I'd love to hear your suggestions and enhancement requests), so you can be sure that the ReVoL Web Worker will remain one of the best editors around.

Registered customers will be notified of product updates by email. This information will also be available on the Web Worker {button Home  
Page,EF(`http://webzone.ccacyber.com/www/jlister/revol.htm',`,1,`)}` at :

http://webzone.ccacyber.com/www/jlister/revol.htm

## How to register

Registering this software costs **just**,

**UK£12.50** (Twelve Pounds and Fifty Pence UK Sterling), or  
**US\$19** (Nineteen US Dollars).

To register , please use the [registration form](#) provided.

Once I have received your registration payment, you will be sent a ReVoL key code. To register your copy. you must enter your key code in the registration dialog, within the properties screen.



The image shows a screenshot of a Windows-style dialog box titled "Properties". It has two tabs: "Properties" and "Registration". The "Registration" tab is selected. The dialog box contains the following text and controls:

*When you register your copy of the ReVoL Web-Worker you will be sent your user name and registration key. Enter your details below to register this software.*

User Name

Key

*Your support will help to increase the functionality of this product. You only have to register once, after that all future versions will be free to registered users. For details on how to register, see the ReVoL Help file.*

Thank You - Have fun !

## Registration Form

Please print this form out and send it to me with your registration payment.

I accept the following payment methods for The ReVoL Web Worker:

- Personal Bankers Cheque
- Postal Order (UK only)
- International Money Order

Payment can be made in either **UK Pounds Sterling** or **US Dollars**.

The address to send your registration form to is :

**ReVoL Design Systems**  
**PO Box 11**  
**Bourne**  
**PE10 9UJ**  
**United Kingdom**

All Cheques should be payable to **Jon Lister**.

ReVoL Web Worker Registration Form

=====

Product	Price	Quantity	Total
=====	=====	=====	=====
Registration Fee	UK£12.50	_____	_____
		US\$19.00	

Total Price \_\_\_\_\_  
=====

I enclose the following payment method (Tick one)

Cheque or Postal Order (enclosed) ( )

International Money Order (enclosed) ( )

\_\_\_\_\_

User Name for Registration: \_\_\_\_\_

Postal address

Street: \_\_\_\_\_

City: \_\_\_\_\_

County/State: \_\_\_\_\_

Postal / Zip Code: \_\_\_\_\_

Country: \_\_\_\_\_

Email: \_\_\_\_\_

Thank you for registering The ReVoL Web Worker !

## About the author



Hi, I'm Jon Lister and I'm responsible for this superb application. I'm 25 years old and have a B.Sc.(Hons) Degree in Computer Science. I specialize in systems analysis design and coding for the PC environment as well as HTML coding for web page development. I am a freelance software developer, and I am currently seeking permanent employment.

You can find my CV online via my [button Home Page](http://webzone.ccacyber.com/www/jlister/index.htm),EF(`http://webzone.ccacyber.com/www/jlister/index.htm`,`',1,`) at :

<http://webzone.ccacyber.com/www/jlister/cv.htm>

## What is the ReVoL Web Viewer ?

The ReVoL Web Viewer, is an integrated web browser, built in to the ReVoL Web Worker. The ReVoL Web Viewer is a fully functioning HTML browser and is integrated with the Windows 95 Internet VxD system, so that it is able to instruct Windows 95 to log on to your Internet connection, when you have requested an online resource.



The ReVoL Web Viewer is not designed to replace browsers such as Netscape or Microsoft's Internet Explorer, the reason I have implemented it as part of the ReVoL Web Worker, is to provide you with a quick method of accessing HTML development information online, and to allow you to 'grab' a whole web page from the Internet, using the grab page function.

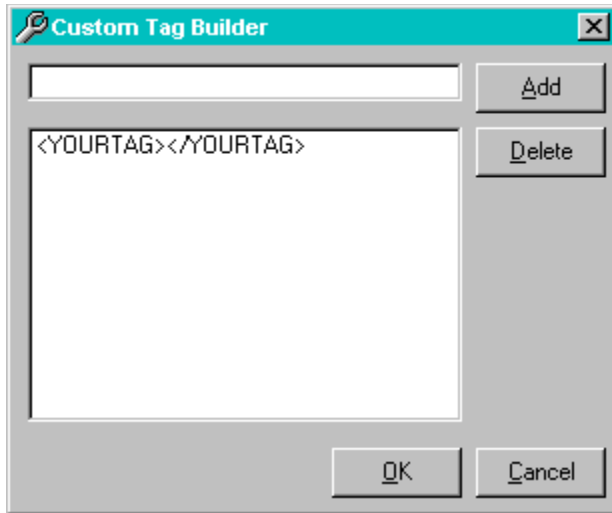
The grab page function allows you to copy a web document, including all the graphical images, to your local drive, with one mouse click. Using this method you no longer have to be content with just storing a copy of the text, and its a lot quicker than grabbing each image individually.

The ReVoL Web Viewer also allows you to save any web documents as a text only document, removing all HTML codes. This is ideal for grabbing research papers or other documentation from the WWW, which you want to print out or use in another text document.

I have designed the ReVoL Web Viewer to be functionally similar to all of the existing popular browsers, I'm sure that you won't have any problems using it.



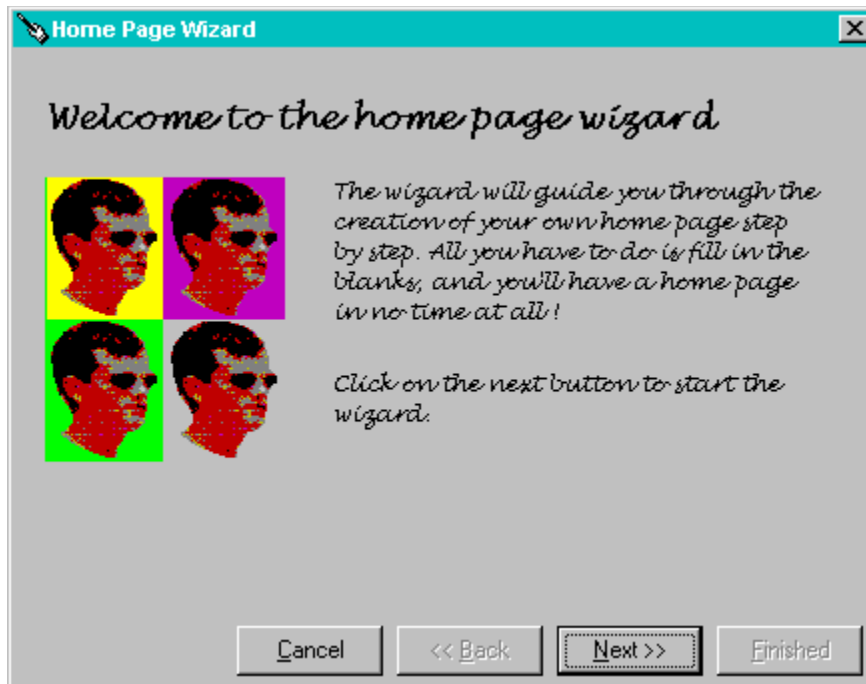
## Using Custom Tags



Custom tags, allow you to create your own customized set of HTML tags. Its easy to do, simply start up the custom tags screen, fill in your tags, click add to add your tags to the collection, and they are ready to use. You **must** enter your tags in this format in order for the custom tags to function correctly :- **<YOURTAG></YOURTAG>**

Once you have entered your custom tags, you can use them, by either dragging and dropping them onto your document window or double clicking them, or selecting them and clicking the OK button.

## Using ReVoL Wizards



The ReVoL Web Worker currently contains 2 wizards to help you work with your HTML document. Wizards are ReVoL programs which help you build HTML code, by using your answers to the questions posed by the wizard.

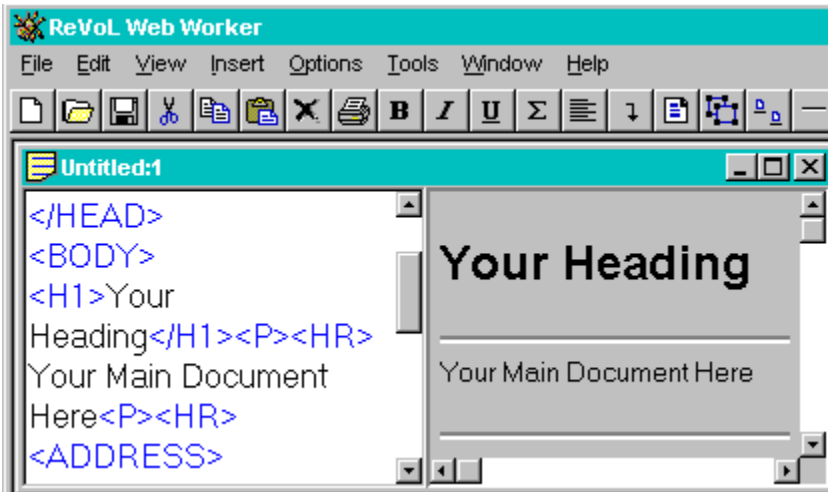
### Home Page Wizard

The home page wizard will guide you through the steps necessary to build your own home page on the WWW. By supplying answers to the questions posed to you, ReVoL can build all the HTML needed for your home page.

### Import Wizard

The Import wizard helps you to import a text document and format it into HTML code. This wizard is very useful for people wishing to convert a spreadsheet or database file into a HTML document, as the wizard can read these files, if you have saved them as comma delimited (\*.csv). If you need to convert a file listing from an FTP site, the Import wizard can help you, as it can also read '00index' files. In fact if you need to import any text file and format it, the Import wizard is the place to start.

## Coming Soon !



**Well, you may be wondering what features are in development for version 1.3, here is a sneak preview :-**

- WYSIWYG Client Side Image Map Builder (Just missed v1.2)
- Floating Toolbars
- More Wizards
- Better Web View
- And many other features, which I'm keeping under wraps !

## Anchor Tag

The anchor tag is used to identify a section of your HTML document as a hypertext link. A hypertext link may be a line of text or a whole graphical image. A hypertext link is used to point the reader of your pages to another HTML document, a file, or application.

For example I use an anchor tag on the ReVoL Web Worker home page, to point the reader to a download location.

```
<A HREF="ftp://ftp.demon.co.uk/pub/ibmpc/win95/apps/revol/Rww32v12.zip">Download  
The ReVoL Web Worker</A>
```

The only part of the above text which would be visible to the reader is the text [Download The ReVoL Web Worker](ftp://ftp.demon.co.uk/pub/ibmpc/win95/apps/revol/Rww32v12.zip), which would appear as a colored hypertext item. The rest of the text is used to direct the browser to the right location on the Internet.

Anchors can also be used to jump to different sections in the same HTML

For example If you wanted to create a jump from an anchor link to some item at the bottom of your document you use what is called a named anchor.

E.g., `<A NAME="Links">Links</A>`. Will be the destination of the following hypertext jump,

```
<A HREF="#Links">Go to links</A>
```

The hash mark (#), identifies the named anchor which is the destination of the jump.

## **Address Tag**

The Address tag is used to display address information, etc. Web authors often place such information at the bottom of a document. An address tag is rendered in italic and implies a paragraph break.

## **Base Tag**

The Base tag allows the URL of a document to be recorded in situations in which the document may be read out of context.

## **Blockquote Tag**

The Blockquote tag allows text which is to be indicated as quoted from another source, to be rendered in a specific identifying way, usually in italic's. Using the Blockquote tag causes a paragraph break.

## **Body Tag**

The body tag allows the formatting of information, which describes the appearance of your HTML document. Body tags should be placed above and below your document text. Body tags can be used to specify the image to appear on a document background, the background color, the text color, and the color of links.



## **Line Break Tag**

The `<BR>` line break tag is used to force a line break.

## **Definition Item Tag**

The definition item tag is used to specify that an item in a list is the definition of a word.

## **Directory List Tag**

The directory list is used to display lists of items, arranged in columns.

## **Definition List Tag**

The definition list tag is used to display a list of items as terms, each of which having a corresponding definition.

## **Definition Term Tag**

The definition term tag is used to specify that an item in a list is a definition.

## **Heading Tag**

A HTML document uses heading tags to identify one of six levels of headings, corresponding to six levels of heading size, heading 1 being the largest font, and heading 6 the smallest font. Heading tags are generally used to structure your HTML document, into sections.

## Head Tag

The Head tag is used as a container for HTML tags that describe the document, such as `<TITLE></TITLE>` tags.

## **Horizontal Rule Tag**

The horizontal rule tag is used to display a dividing line between sections in your HTML document. This line typically has shaded 3D look, but you can specify a solid line or a graphical replacement.



## **HTML Tag**

The HTML tag is used to identify your document as a HTML document. The HTML tag should wrap all other tags in your document.

## **Image Tag**

The image tag is used to display graphic images and video within your HTML document.

## **Is Index Tag**

The Is Index tag is used to identify your HTML document as an index document. Which mean's that the reader may use a search method to look for certain key words within your document text. However your server must support keyword searches and have a working search engine, or nothing will happen.

## **List Item Tag**

The list item tag, identifies an item within a list, except for definition list items.

## **Link Tag**

The link tag is used to identify a relationship between your HTML document and another item. It is formatted in the same way as an anchor tag, but does not have a closing tags, so it is said to be an empty tag.

## **Menu List Tag**

The menu list tag is used when you want to generate a small compact list of items.

## **Meta Tag**

The meta tag is used within the <HEAD> tag to pass information to a server. This information can be specialized document information, to allow indexing and other tasks. The meta tag can also be used to implement server push and pull.

## **Next Id Tag**

The next id tag is used to identify the next numeric document identifier.



## **Ordered List Tag**

This tag is used to generate a numbered list of items, which are following a certain order within your document. The numbering style may be Arabic, upper or lowercase roman numerals, and can be formatted to continue the numbering of a previous ordered list.

## Paragraph Tag

The paragraph tag is used to identify a paragraph section within your text. In HTML level 0 the paragraph tag was simply `<P>` it was an empty tag, which did not wrap any text. However in HTML 2 & 3, the paragraph tag can also act as a container for your document text, so that you can wrap it in the following tag. `<P>text</P>`.

## **Preformatted Tag**

This tag is used to identify a section of your HTML document that you have preformatted the appearance of , using spaces and line breaks. Use this tag if your importing text into your current document and wish to keep the formatted appearance of the text.

## **Title Tag**

The title tag is used to specify the title of your HTML document. The title tag must occur within the <HEAD> tag of a document, and remember that your document title is usually displayed in the caption window of browsers, and it is this title that appears in bookmarks of web sites, when saved by a browser. So use a good descriptive title.

## **Unordered List Tag**

A unordered list tag is used to generate a list of items which are displayed as a bulleted list, rather than a list of numbered items. Use this tag if you require a list that does not require any specific order.

## **Comment Tag**

The comment tag `<!-- -->` is used to specify a section of your HTML document as a comment, and subsequently not displayed when the document is viewed in a browser.

## **Bold Tag**

The bold tag is used to display a section of text in **boldface**

## **Cite Tag**

The cite tag is used to identify sections of your document as a citation, and the identified text is usually displayed in italic.



## **Code Tag**

This tag is used to display a section of text in a fixed pitch font, to identify it as an example of program code. The font used is similar to the font of a MsDos prompt.

## **Emphasis Tag**

This tag is used to display a section of text with emphasis, typically by using italics.

## **Italic Tag**

The italic tag is used to display a section of text in *italics*.

## **Keyboard Tag**

The keyboard tag is used to display a section of text as text typed at a keyboard.

## **Sample Tag**

The sample tag is used to denote a section of text as a sample output sequence.

## **Strong Tag**

This tag is used to display a section of text in **boldface**.

## **Typewriter Text Tag**

The typewriter text tag, is used to display a section of text in a fixed pitch typewriter font, similar to that used in Pulp Fiction.

## **Variable Tag**

This tag is used to denote a section of text as a variable name, normally displayed in italics.



## **Form Tag**

The form tag is used to generate a form as part of your HTML document, such as a questionnaire, requiring user input. Forms can be generated with input fields, radio buttons, check boxes and selectable lists.

## **Input Tag**

The input tag is used within a form tag to generate a input field. It is an empty tag.

## **Option Tag**

The option tag is used within a `<SELECT>` tag to define the number of options present for a reader to select.

## Select Tag

The select tag is used within a <FORM> tag to define a selectable list or list box, to appear within your HTML document.

## **Text Area Tag**

The text area tag is used to generate a multiline text input field, with optional default text, within a input form, in your HTML document, such as a questionnaire.

## **Abbreviation Tag**

The abbreviation tag is used to denote an abbreviation within your document text.

## **Acronym Tag**

The acronym tag is used to denote an acronym within your document text.

## **Argument Tag**

The argument tag is used to denote program function arguments within your document text.



## **Byline Tag**

The byline tag is used to denote authorship within your document text.

## **Caption Tag**

The caption tag is used within the <TABLE> tag to give a title to the table.

## **Defining Instance Tag**

The defining instance tag is used to denote a defining instance of a term within your document text.

## **Division Tag**

The division tag is used to denote different levels of a hierarchical structure within your document text.

## **Literal Tag**

The literal tag is used to identify a section of your HTML document that you have preformatted the appearance of, using spaces and line breaks. Use this tag if your importing text into your current document and wish to keep the formatted appearance of the text.

## **Person Tag**

The person tag is used to denote a proper name within your document text.

## **Inline Quote Tag**

The inline quote tag is used to denote a short inline quotation within your document text.

## **Range Tag**

The range tag is used to denote the range of a document, for purposes such as searching of annotation.



## **Strikethru Tag**

The strikethru tag is used to display text with a horizontal line striking through it. E.g. ~~ReVøL~~.

## **Spot Tag**

The spot tag is used to insert ID's for use with the <RANGE> tag.

## **Style Tag**

The style tag is used to display information using a specific style notation within your document text.

## **Subscript Tag**

The subscript tag is used to display text as a subscript using a smaller font.

## **Superscript Tag**

The superscript tag is used to display text as a superscript using a smaller font.

## **Table Tag**

The table tag is used to display a series of rows and columns containing table cells, in a graphical format, similar to a spreadsheet layout. Table cells can contain text, images and link tags.

## **Table Header Tag**

The table header tag is used for naming table rows.

## **Table Data Tag**

The table data tag is used to display data within a table structure.



## **Table Row Tag**

The table row tag is used to define a row within a table structure.

## **Underline Tag**

The underline tag is used to display a section of text as underlined within your document text.

## **Basefont Tag**

The basefont tag is used to define a font size for a section of text within your document text.

## **Blink Tag**

The blink tag is used to display a section of text within your document text, that will blink when viewed with a Netscape browser.

## **Center Tag**

The center tag is used to center a block of text within your document text.

## **Font Tag**

The font tag is used to specify the font size, color and typeface of a block of text within your document text.

## **No Break Tag**

The no break tag is used to prevent line break occurring within a section of your document text.

## **Word Break Tag**

The word break tag is used to allow a break within a no break section of your document text.



## **Frame Tag**

The frame tag is used to denote a single frame within a <FRAMESET> tag. Frames are multiple scrollable regions within a browser window, that can each display a different HTML document from a separate location. Currently frames only work with Netscape Navigator 2.x browsers.

## **Frameset Tag**

The frameset tag is used to denote a frame section within your current document. The frameset tag is the main container tag for <FRAME> tags.

## **Client Side Image Map Tag**

Client side image maps are a way of allowing users to click on different sections of a graphical image, to gain access to different documents, relevant to the image that was clicked. The different clickable sections of an image are defined using the <MAP> tag, and the destination document is also specified.

## **NoFrames Tag**

The `noframes` tag is used to denote alternative sections of your document, to provide access to the sections specified by frames, for browsers that do not currently support frames.

## **Background Sound Tag**

The background sound tag is allows the creation of HTML documents that have background soundtracks, which play as the user views the page. This only works with Microsoft Internet Explorer 2.x browsers.

## **Marquee Tag**

The marquee tag allows you to create scrolling banners of text within your document text.

## **Applet Tag**

The applet tag is used to embed Java applets within your document text.

## **Embed Tag**

The embed tag is used to embed applications within your document text.



# HTML Tag Index

## HTML Level 0

<A>

<ADDRESS>

<BASE>

<BLOCKQUOTE>

<BODY>

<BR>

<DD>

<DIR>

<DL>

<DT>

<H>

<HEAD>

<HR>

<HTML>

<IMG>

<ISINDEX>

<LI>

<LINK>

<MENU>

<META>

<NEXTID>

<OL>

<P>

<PRE>

<TITLE>

<UL>

<!-- -->

## HTML Level 1

<BOLD>

<CITE>

<CODE>

<EM>

<I>

<KBD>

<SAMP>

<STRONG>

<TT>  
<VAR>

## **HTML Level 2**

<EMBED>  
<FORM>  
<INPUT>  
<OPTION>  
<SELECT>  
<TEXTAREA>

## **HTML Level 3**

<ABBREV>  
<ACRONYM>  
<ARG>  
<BYLINE>  
<CAPTION>  
<DFN>  
<DIV>  
<LIT>  
<PERSON>  
<Q>  
<RANGE>  
<S>  
<SPOT>  
<STYLE>  
<SUB>  
<SUP>  
<TABLE>  
<TH>  
<TD>  
<TR>  
<U>

## **Netscape Version 1.1 HTML Extensions**

<BASEFONT>  
<BLINK>  
<CENTER>  
<FONT>  
<NOBR>

<WBR>

## **Netscape Version 2.0 HTML Extensions**

<FRAME>

<FRAMESET>

<NOFRAMES>

<MAP>

## **Microsoft Internet Explorer 2.0 HTML Extensions**

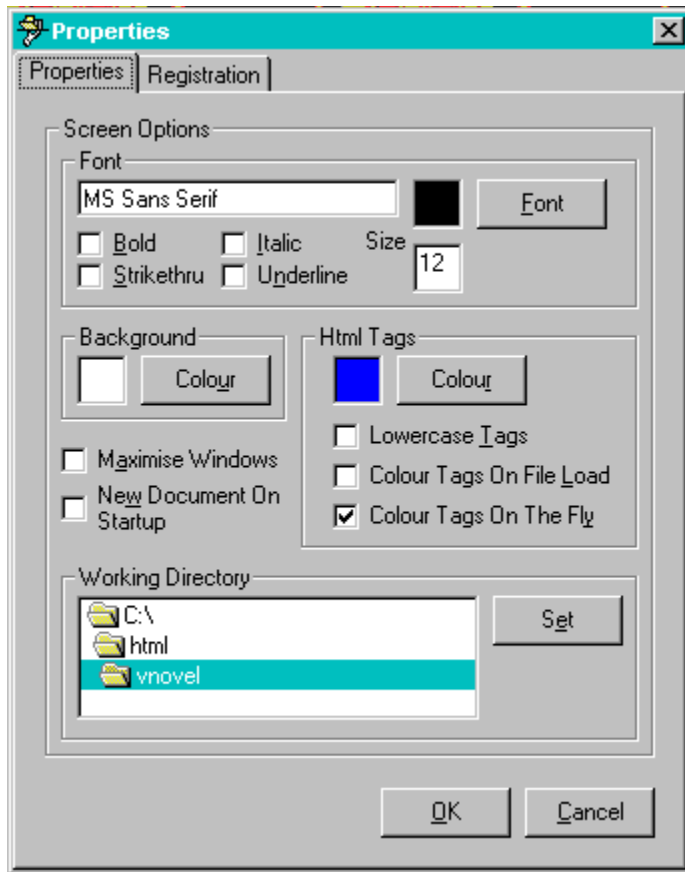
<BGSOUND>

<MARQUEE>

## **Java HTML Extensions**

<APPLET>

## Setting Options Within ReVoL



All user configurable options, within The ReVoL Web Worker, are maintained via the properties dialog, accessed via the options menu.

The ReVoL Web Worker allows you to configure, the following options:

### Screen Options

- Font Type
- Font Size
- Font Color
- Font Bold
- Font Italic
- Font Underline
- Font Strikethru
- Background Screen Color

### HTML Options

- Lowercase tags
- Automatic coloring of all tags within a document when you open it.
- Automatic coloring and lowercase formatting of tags that you type in manually.
- Select the highlight color of HTML tags.

## Program Options

- Open a new blank document window when ReVoL is run.
- Maximize all document windows that you open.
- Select the ReVoL default working directory.
- Registration of your copy.

The registration section of the properties dialog is used to register your copy of this software, by entering your user name and key code, supplied when you register



The image shows a screenshot of a Windows-style dialog box titled "Properties". It has two tabs: "Properties" and "Registration". The "Registration" tab is selected. The dialog contains the following text and controls:

*When you register your copy of the ReVol Web-Worker you will be sent your user name and registration key. Enter your details below to register this software.*

User Name

Key

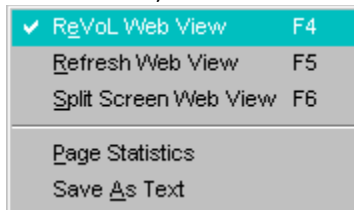
*Your support will help to increase the functionality of this product. You only have to register once, after that all future versions will be free to registered users. For details on how to register, see the ReVolHelp file.*

## Using the right mouse button

In maintaining the standard Windows 95 Interface guidelines, the ReVoL Web Worker, allows the user to make use of the right mouse button, whilst editing a HTML document. When editing a HTML document in a text window, the right mouse button is used to activate a pop-up menu of HTML codes and editing functions, as well as access to the quicktags function



However when the right mouse button is activated over a ReVoL Web View preview window, it activates a pop-menu which provides options specific to the preview window.



I'm sure that you will find using the right mouse button for these functions, provides an ease of use and speeds the development process.

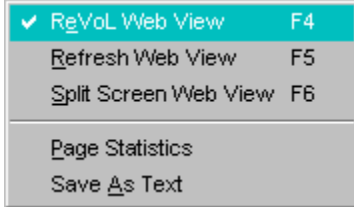
## Using ReVoL Web View Mode

ReVoL Web View mode, is a built in WYSIWYG preview function, which allows you to view your current document in a graphical form, as it would appear when viewed via a web browser on the WWW. When activated the ReVoL Web View will turn your current document window into a browser view of the HTML document you are currently editing.

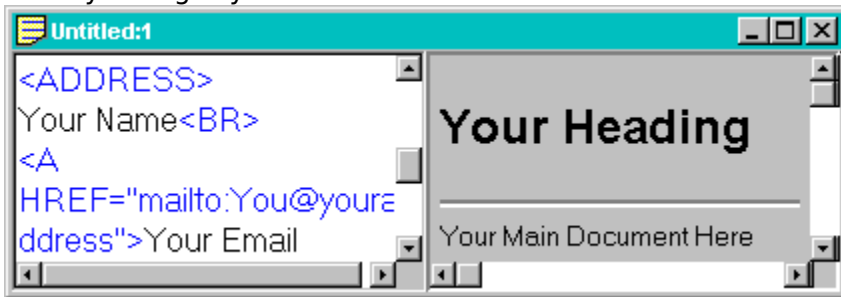


The ReVoL Web View also allows your current document window to act as a local browser, so any links on your currently previewed page, which are locally stored, can be accessed as if you were browsing them on the WWW.

Activating the ReVoL Web View mode, also gives you access to additional functions, either via the right mouse button, when activated over a ReVoL Web View preview window, or via the standard menu's.



You can also split the screen of your current document window, so that you can view your HTML document text and view the preview of it, at the same time. All editing functions can be activated in this mode, and the preview window can then be refreshed to reflect any changes you have made to the document text.

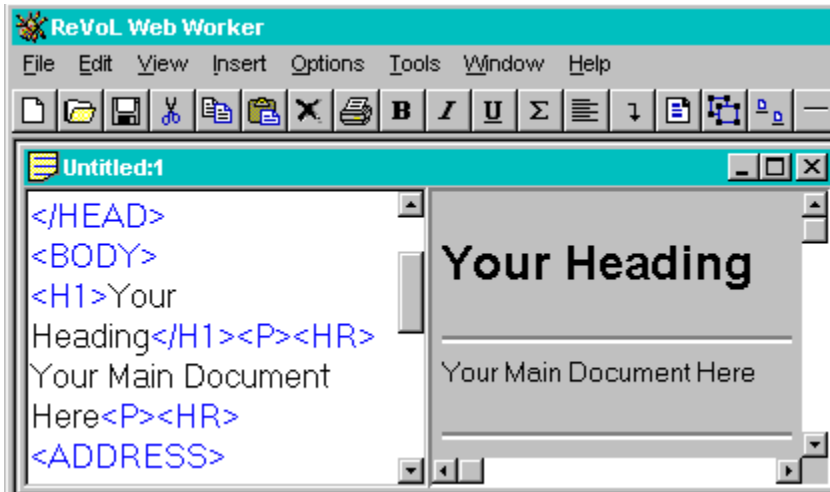


The ReVoL Web View supports many HTML tags, including colored fonts and tables.

However it currently does not support every available tag (yet). Always test your finished page using your default browser, **BEFORE** publishing it.



## Introducing The ReVoL Web Worker



Welcome to The ReVoL Web Worker, HTML editing software for Microsoft Windows 95. The ReVoL Web Worker allows you to create World Wide Web Pages, using hypertext Markup Language (HTML) codes which support HTML 3.0, Netscape 2.0 and Iexplore 2.0. Web Worker is a fully 32-bit application designed for the Windows 95 environment. Web Worker incorporates many of the standard features that you would expect from the Windows 95 interface making Web Worker the premier HTML editor for Windows 95. ReVoL Web Worker has no file size restrictions which means it is not restricted to the 32k barrier. This version of the ReVoL Web Worker is shareware, it is a fully featured product with no restrictions on its capabilities. **The ReVoL Web Worker is NOT in the public domain.** I reserve all rights to this program and any accompanying works (like this help file). I encourage the wide distribution of this program, but I do ask that all the documentation and other files released with this program be kept together. I also expressly prohibit any sale of this version without my prior written consent. You may use this program freely for 30 days after your original download, after that time, if you find it useful, I ask that you register your copy. By registering, you are helping to insure that The ReVoL Web Worker maintains its position at the forefront of HTML development.

Just look at these features: Fully 32-bit application, Designed for Windows 95, No file size restrictions, Drag and drop editing within and between open windows. Home page wizard, Tip of the day, HTML code stripper, Customizable font size, font type, font color, background color, HTML tag color, Extended character support, HTML 3.0, Netscape 2.0, Iexplore 2.0, Custom tags, File Import, Support for tables, frames, client side image maps, Many HTML tag builders to help you, Integrated web browser, WYSIWYG HTML preview mode, 'on the fly' HTML tag coloring and formatting.

The ReVoL Web Worker was written by me, Jon Lister because I was unhappy with the current crop of HTML editors especially the ridiculous registration costs of some of the so called shareware editors. It took me about a month of my free time. I believe that my registration fee, is very reasonable and competitive, especially as this is a one time registration fee which will entitle you to a free upgrade to all future versions of the ReVoL Web Worker.

I now use the ReVoL Web Worker to maintain my own {button Home  
Page,EF(`http://webzone.ccacyber.com/www/jlister/index.htm',`,`1`,`')} at

<http://webzone.ccacyber.com/www/jlister/>

This is the place to look for updated information regarding the Web Worker. This is my first shareware program release so I hope you like it and will support it. I'm always working to update the Web Worker so be on the look out for the next version.

I'm currently working on improvements to the Web Worker, such as: Better user interface, Better help, More wizards, Increased HTML 3.0 support, External data handling, Client Side Image Map Graphical Builder. If you have any suggestions or think you may have found a bug, please let me know by email to [Jon@Junk.demon.co.uk](mailto:Jon@Junk.demon.co.uk)

I have designed The ReVoL Web Worker as a professional tool, for people with abilities in HTML coding but who wish to accelerate the development process and gain advance knowledge to an expert level in HTML coding and Web page design

However I also hope that features such as the home page wizard will enable those users who are new to HTML coding to learn what they can achieve, by using this tool.

**Hi, thanks for trying the ReVoL Web Worker ! I hope that you like it !**

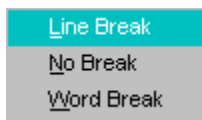
**Please consider registering your copy, so that I can continue to add new and exciting features, as the versions are updated.**

Quicktags are a selection of frequently used HTML tags that normally allow additional specification, via a dialog box. Using them in their Quicktag form, outputs the selected tag in its barest form, E.g. **<P>** for a paragraph break.

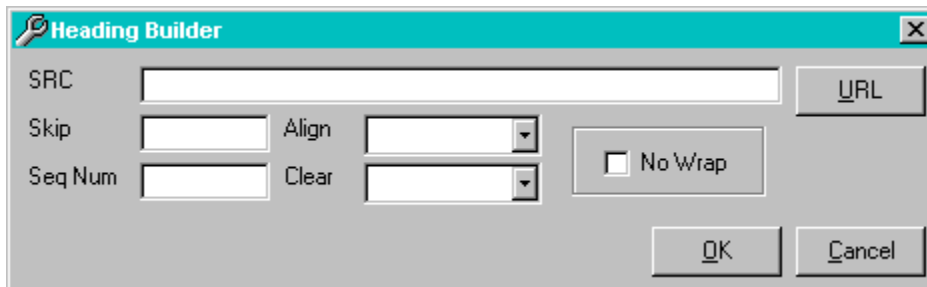
## Building HTML in ReVoL

The ReVoL Web Worker has been designed for Windows 95 and therefore has a very standardized interface, which conforms to the 'look and feel' of Windows 95. The main editor windows operate in much the same way as a standard text editor, if you can use Windows Notepad, you can use The ReVoL Web Worker.

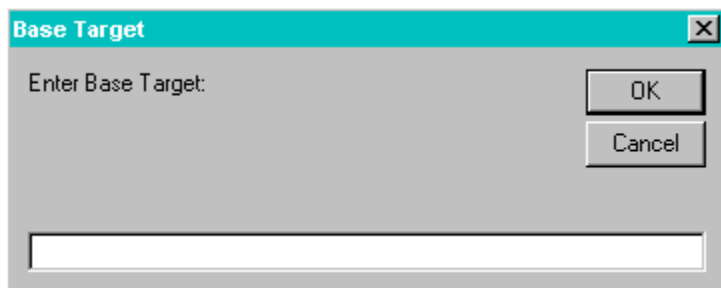
The most common operations are of course, entering HTML tags. This can be achieved in 4 ways, depending on the characteristics of the HTML tag. The easiest type of HTML tag is a straight forward tag that has no attributes. To wrap text in this kind of tag, you simply highlight the text, click the right mouse button and select the tag from a menu, the text is then automatically wrapped with the tag.



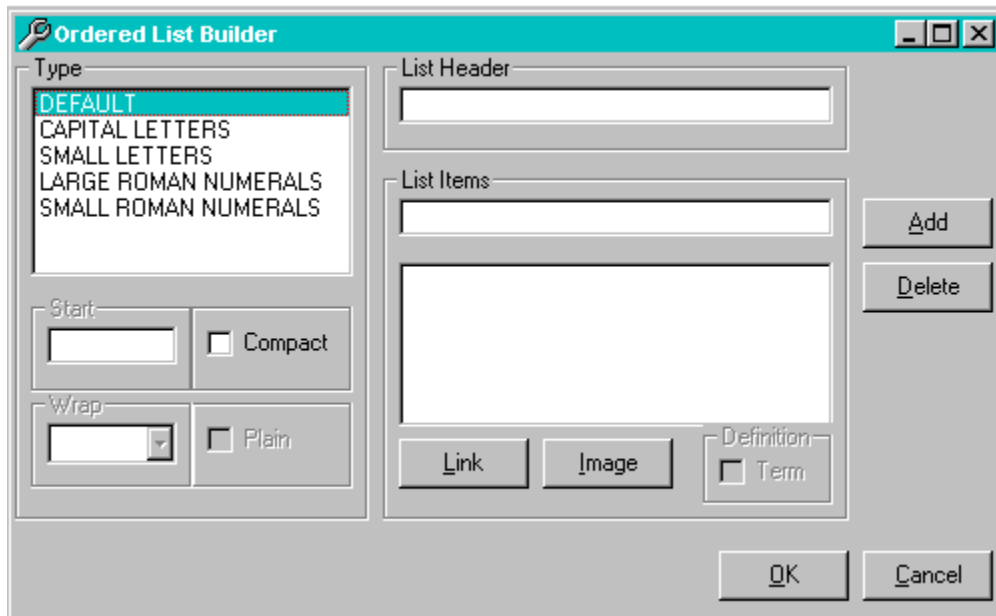
Other HTML tags give you the option of specifying various attributes which affect the behavior of the tag. When you select a tag that has attributes you will be presented with a new screen which will help you to specify the attributes you wish to use. If you do not wish to use any of the attributes simply click on the OK button without entering any attributes to insert a bare tag.



Some HTML tags require you to enter data within a screen form which the tag requires in order to be valid.



Other HTML tags have multiple entries such as a Table Row or a List tag. I have implemented these tags with a tag builder screen which allows you to build multiple entries within the screen so that you do not have to type the text first, and you can specify various options for each of the items in for example a list, as you build the list. Some builder screens have tabbed sections which group together all the functions necessary to build the relevant HTML code. For example all the options necessary to build a table are present on the table builder. Other examples are the frame builder and the forms builder.



The ReVoL Web Worker interface has been designed to be as intuitive as possible and I do not expect anyone who has used Windows applications to have a problem using it. For step by step instructions, on inserting tags see [How To Insert a HTML tag](#)

## **How to insert HTML tags**

1. If you want to wrap some text in a HTML tag, firstly select and highlight the text using the mouse. If you want to build a multiple tag such as a list, you don't have to type you text first, as these types of tag have builder screens which help you to build multiple entries.
2. Select the tag you wish to insert, either from the insert menu or via one of the pop-up menu's from the toolbar, or by clicking the right mouse button.
3. Select the options you require for the tag (if any) and click on the OK button.
4. The selected tag will now appear in the editor window.

## **How to turn a text document into a web page in less than 1 minute**

1. Open the text document you wish to use into an editor window, using open from the file menu.
2. Highlight the document text using the mouse.
3. From the Tools menu select the Add Minimal option and then select basic.
4. Choose whether or not you want text prompts.
5. Your text will now be wrapped in HTML tags and will have formed a basic web document.
6. Save and Test.



## File Menu

|  |        |
|--|--------|
| N <u>e</u> w                           | Ctrl+N |
| O <u>p</u> en...                       | Ctrl+O |
| C <u>l</u> ose                         |        |
| I <u>m</u> port File...                |        |
| S <u>a</u> ve                          | Ctrl+S |
| Sa <u>v</u> e A <u>s</u> ...           | Ctrl+A |
| Sa <u>v</u> e A <u>s</u> T <u>e</u> xt |        |
| P <u>r</u> int S <u>e</u> tup          |        |
| P <u>r</u> int                         | Ctrl+P |
| E <u>x</u> it                          |        |

### **New**

Opens a new editor window in the work area.

### **Open**

Opens an existing HTML file.

### **Close**

Closes the editor window.

### **Import File**

Allows you to import an text based file contents.

### **Save**

Saves the currently active HTML file.

### **Save As**

Saves the currently unnamed active HTML file.

### **Save As Text**

Only available when ReVoL Web View mode is active, this function saves the currently active HTML file as a text document, with all the codes removed. This is the fastest way to remove all HTML codes from a large document.

### **Print Setup**

Displays the print setup dialog box.

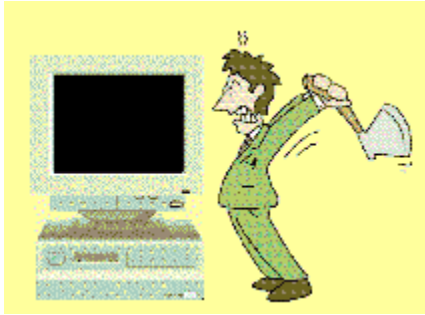
### **Print**

Displays the print dialog box, and allows you to print the contents of an open edit window.

### **Exit**

Closes ReVoL. Web Worker

## ReVoL FAQ



**Here are a few of the most frequently asked questions regarding the ReVoL Web Worker, and my answers :-**

**Q: Why does a new instance of my browser appear every time I press the launch browser button ?**

When I added this feature to the Web Worker I was thinking of the way that I work, when editing a document. I launch a copy of my browser at the start of my edit and switch to it every time I make a change, to view the result. The launch browser button was never intended to switch to your browser, as this is easily achieved by using the Win95 taskbar. To speed up development why not use the WYSIWYG preview feature, as you add features, then when you are ready for a full test, launch your default browser.

**Q: How can I get ReVoL to use a different browser when viewing my documents ?**

When you tell ReVoL to launch your browser, it contacts the Win95 system registry, for the browser that is associated with .htm & .html documents. Therefore if you want to specify a different browser you must do it within the system registry. However, you can also use the 'View With' option from the tools menu to view your current document in any Windows application that accepts a text file based input, this could include any number of browsers.

**Q: Where can I get an up to date copy of ReVoL ?**

I always upload new versions to [ftp.demon.co.uk/pub/ibmpc/win95/apps/revol](ftp://ftp.demon.co.uk/pub/ibmpc/win95/apps/revol) however I would be grateful if international users could upload it to their local ftp server and inform me of the location so that I can tell others, so that the load on the demon ftp server is reduced.

**Q: Why is your server so slow ?**

The demon ftp server is not associated with me or the ReVoL Web Worker in any way, it's just my access provider here in the UK . I therefore have no control over its speed or accessibility.

**Q: Can you email me a copy of the Web Worker so that I don't have to download it from an ftp site ?**

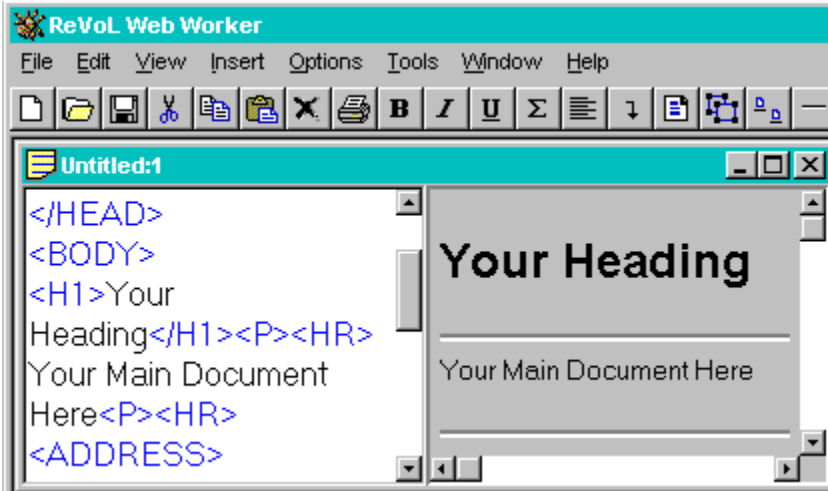
No, due to the size of the program I simply do not have the time or the money to email everyone. However if you wish to register, I could send you a copy by standard postal service !

**Q: Is the ReVoL Web Worker free ?**

No, with version 1.2, the ReVoL Web Worker, has become a shareware application. You

may use it freely for thirty days, after which time, you must register it.

## What's New In Version 1.2



I have made many changes to the original code and functionality of version 1.1 of the ReVoL Web Worker, including a few bug fixes. I would like to take this opportunity to thank all those users who sent me mail with functionality suggestions and bug reports, you have helped speed the development of this version. Anyway here is a list of the main changes I have implemented in this version:-

**NEW**

### WYSIWYG Preview

With version 1.2 the ReVoL Web Worker is entering the realms of WYSIWYG ! By selecting the ReVoL Web View feature from the view menu, you can display the current document window, as a WYSIWYG web browser view. You can also display a split screen view of your text and the web preview, and navigate locally, using the preview window. When viewing your current document in preview mode, you also have access to 2 new features, Page Statistic's and Save As Text.

**NEW**

### ReVoL Web Viewer

This is the ReVoL Integrated web browser. I have added the option to allow the user to go online and grab whole web pages from the net, including all graphic's, with one mouse click. This allows you to view the stored pages, locally, exactly as they would appear on the net.

**NEW**

### Auto Color Tags

With this version I have added the option to allow automatic 'on the fly' coloring and formatting of HTML tags as you type.

**NEW**

### Save As Text

When viewing your current document in ReVoL Web View mode, you have the option to save your HTML document as text, with all the HTML codes removed. This method is the best way to remove all HTML codes from large documents.

**NEW**

### Page Statistic's

When viewing your current document in ReVoL Web View mode, you now have the ability to view statistics relating to your current page.

NEW

### **Test Wav's and Avi's**

In this version, you can test wav and avi files, which you are inserting into your HTML document, with the BGSOUND or IMG tags.

NEW

### **Better Right Mouse Button**

I have improved the pop-up right mouse button. To include text editing functions and the ability to switch to ReVoL Web View mode using the right mouse button. I have also added right mouse button support to the Web View mode.

NEW

### **Improved Interface**

I have amended the interface for forms. All tags relating to forms are now contained within one big tabbed dialog, which allow the user to setup any type of form from one builder screen.

NEW

### **Java <APPLET> tag**

I have added support for the new Java applet HTML tag, which is used to insert Java applets within HTML documents.

NEW

### **Re-Written Strip and Color Codes Routine**

Both the Strip HTML and the Color tags, routines, have been completely re-coded for speed. Hopefully, they run a little faster now.

NEW

### **Temporary File Use.**

ReVoL now uses a temporary file to store changes made to documents, before saving. This means that you do not have to keep saving your document, when you want to view it in a browser. In fact you can make as many changes as you want, view them, then discard them, without affecting your original document.

NEW

### **More Options in Properties Dialog**

You can now configure whether or not you want your HTML tags to be colored in, and formatted as you type, and configure whether you want all opened mdi windows to be maximized.

NEW

### **Import Wizard**

This is a new wizard helper, which guides you through the steps needed to import a text document and automatically format it as HTML.

NEW

### **Convert To**

ReVoL now allows you to convert your current document, to and from UNIX formatting.

NEW

### **ReVoL Has Gone SHAREWARE**

As of this version The ReVoL Web Worker is now a shareware application, which requires you to make a payment to the author if you wish to continue using it after an initial trial period of 30 days. But don't worry it's still good value and the benefits will be huge.

**NEW**

### **New Help File**

I've amended and added more information to the ReVoL help file, and will continue to add more detail, for version 1.3

**NEW**

### **More Tips**

Yep, tip of the day has got bigger ! Look out for more handy hints.

## Edit Menu

|                    |        |
|--------------------|--------|
| <u>U</u> ndo       | Ctrl+Z |
| C <u>u</u> t       |        |
| <u>C</u> opy       |        |
| <u>P</u> aste      |        |
| D <u>e</u> lete    |        |
| <u>F</u> ind       | Ctrl+F |
| Find <u>N</u> ext  | F3     |
| <u>R</u> eplace    | Ctrl+H |
| Select <u>A</u> ll |        |

### Undo

Reverses the last command received by the program.

### Cut

Removes selected text from the editor window and places it on the Windows clipboard.

### Copy

Copies selected text from the editor window and places it on the Windows clipboard.

### Paste

Copies the contents of the Windows clipboard into the editor window.

### Delete

Deletes the selected text from the editor window.

### Find

Displays the Find dialog box, which allows you to find a specified text string within the text of an editor window.

### Find Next

Finds the next occurrence of a word previously specified in the find dialog box.

### Replace

Displays the Find / Replace dialog box, which allows you to find a specified text string within the text of an editor window and replace it with another specified text string.

### Select All

Copies all text from the editor window and places it on the Windows clipboard.

## View Menu

|                       |    |
|-----------------------|----|
| ✓ ReVoL Web View      | F4 |
| Refresh Web View      | F5 |
| Split Screen Web View | F6 |

### ReVoL Web View

This check mark menu option, switches between, text mode and ReVoL Web View mode.

### Refresh Web View

This option, redraws the contents of the current Web view window. Use this option, if your working in split screen mode, and you have just changed the document text.

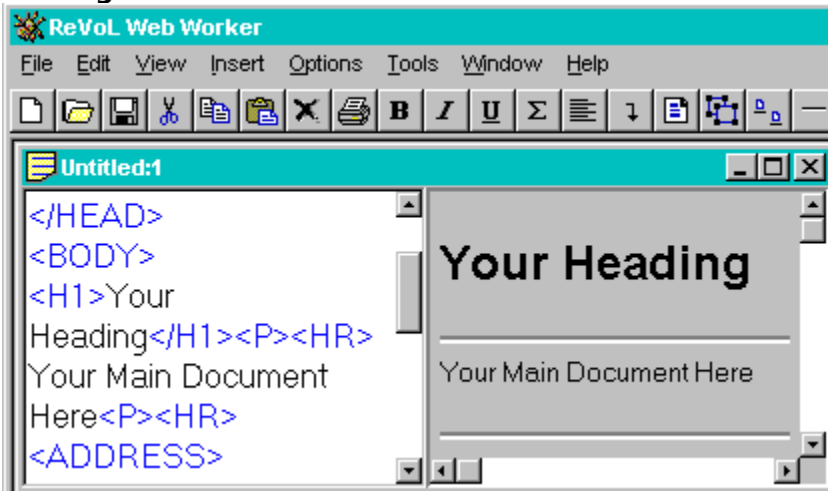
### Split Screen Web View

This check mark menu option switches between a full screen Web view and a split screen view of both your document text and the Web view.



## License Agreement

**ReVoL Web Worker(R) version 1.2**  
**Copyright (C) 1995,1996 Jon Lister**  
**All Rights Reserved**



## License Agreement

YOU SHOULD CAREFULLY READ THE FOLLOWING TERMS AND CONDITIONS BEFORE USING THIS SOFTWARE. UNLESS YOU HAVE A DIFFERENT LICENSE AGREEMENT SIGNED BY JON LISTER, YOUR USE OF THIS SOFTWARE INDICATES YOUR ACCEPTANCE OF THIS LICENSE AGREEMENT AND WARRANTY.

### Disclaimer of Warranty

THIS SOFTWARE AND THE ACCOMPANYING FILES ARE DISTRIBUTED "AS IS" AND WITHOUT WARRANTIES AS TO PERFORMANCE OF MERCHANTABILITY OR ANY OTHER WARRANTIES WHETHER EXPRESSED OR IMPLIED. BECAUSE OF THE VARIOUS HARDWARE AND SOFTWARE ENVIRONMENTS INTO WHICH REVOL WEB WORKER MAY BE PUT, NO WARRANTY OF FITNESS FOR A PARTICULAR PURPOSE IS OFFERED.

JON LISTER DISCLAIMS ALL WARRANTIES WITH REGARD TO THIS SOFTWARE INCLUDING ALL IMPLIED WARRANTIES OF MERCHANTABILITY AND FITNESS, IN NO EVENT SHALL JON LISTER BE LIABLE FOR ANY SPECIAL, INDIRECT OR CONSEQUENTIAL DAMAGES OR ANY DAMAGES RESULTING FROM LOSS OF USE, DATA OR PROFITS, WHETHER IN AN ACTION OF CONTRACT, NEGLIGENCE OR OTHER TORTIOUS ACTION ARISING OUT OF OR IN CONNECTION WITH THE USE OR PERFORMANCE OF THIS SOFTWARE.

GOOD DATA PROCESSING PROCEDURE DICTATES THAT ANY PROGRAM BE THOROUGHLY TESTED WITH NON-CRITICAL DATA BEFORE RELYING ON IT. THE USER MUST ASSUME THE ENTIRE RISK OF USING THE PROGRAM. ANY LIABILITY OF THE SELLER WILL BE LIMITED EXCLUSIVELY TO PRODUCT REPLACEMENT OR REFUND OF PURCHASE PRICE.

## Shareware Version

THE REVOL WEB WORKER WAS DEVELOPED BY JON LISTER 1995,96. ALL CORRESPONDANCE REGARDING THIS SOFTWARE SHOULD BE DIRECTED TO JON@JUNK.DEMON.CO.UK THE REVOL WEB WORKER IS NOT IN THE PUBLIC DOMAIN ALL RIGHTS TO REVOL WEB WORKER INCLUDING COPYRIGHT ARE RESERVED AND OWNED WHOLLY BY JON LISTER.THE REVOL WEB WORKER MAY NOT BE SOLD OR DISTRIBUTED AS PART OF ANY SHAREWARE OR CD-ROM COMPILATIONS WITHOUT OBTAINING EXPRESS WRITTEN CONSENT FROM JON LISTER.

## **Distribution**

YOU ARE HEREBY LICENSED TO MAKE AS MANY COPIES OF THIS SOFTWARE AND DOCUMENTATION AS YOU WISH. GIVE EXACT COPIES OF THE ORIGINAL SHAREWARE VERSION TO ANYONE; AND DISTRIBUTE THE SHAREWARE VERSION OF THE SOFTWARE AND DOCUMENTATION IN ITS UNMODIFIED FORM VIA ELECTRONIC MEANS. THERE IS NO CHARGE FOR ANY OF THE ABOVE.

YOU ARE SPECIFICALLY PROHIBITED FROM CHARGING, OR REQUESTING DONATIONS, FOR ANY SUCH COPIES, HOWEVER MADE; AND FROM DISTRIBUTING THE SOFTWARE AND/OR DOCUMENTATION WITH OTHER PRODUCTS (COMMERCIAL OR OTHERWISE) WITHOUT PRIOR WRITTEN PERMISSION, WITH ONE EXCEPTION: DISK VENDORS APPROVED BY THE ASSOCIATION OF SHAREWARE PROFESSIONALS ARE PERMITTED TO REDISTRIBUTE REVOL WEB WORKER, SUBJECT TO THE CONDITIONS IN THIS LICENSE, WITHOUT SPECIFIC WRITTEN PERMISSION.

## **Thirty Day Evaluation**

THIS IS VERSION OF THE REVOL WEB WORKER IS SHAREWARE. YOU ARE HEREBY LICENSED TO USE THIS SOFTWARE FOR EVALUATION PURPOSES WITHOUT CHARGE FOR A PERIOD OF 30 (THIRTY) DAYS, COUNTING FROM THE DAY YOU DOWNLOAD THIS SOFTWARE.

## **Registered Version**

ONE REGISTERED COPY OF THE REVOL WEB WORKER MAY EITHER BE USED BY A SINGLE PERSON WHO USES THE SOFTWARE PERSONALLY ON ONE OR MORE COMPUTERS,OR INSTALLED ON A SINGLE WORKSTATION USED NON-SIMULTANEOUSLY BY MULTIPLE PEOPLE, BUT NOT BOTH.

YOU MAY ACCESS THE REGISTERED VERSION OF THE REVOL WEB WORKER THROUGH A NETWORK, PROVIDED THAT YOU HAVE OBTAINED INDIVIDUAL LICENSES FOR THE SOFTWARE COVERING ALL WORKSTATIONS THAT WILL ACCESS THE SOFTWARE THROUGH THE NETWORK. FOR EXAMPLE, IF 6 DIFFERENT WORKSTATIONS WILL ACCESS THE REVOL WEB WORKER ON THE NETWORK, EACH WORKSTATION MUST HAVE ITS OWN SEPARATE LICENSE, REGARDLESS OF WHETHER THEY USE THE REVOL WEB WORKER AT DIFFERENT TIMES OR CONCURRENTLY.

## Insert Menu

The Insert menu contains all the HTML tags available in The ReVoL Web Worker. The HTML tags are grouped under various headings which best describe the functions for which the tags are used.



### Block Tags

These tags are used to format blocks of text within your HTML documents.

### Break Tags

These tags are used to insert text breaks within your HTML documents.

### Document Tags

These tags are used for organizing and setting navigation methods within your HTML documents.

### Form Tags

These tags are used to generate data selection and input forms within your HTML documents.

### Headings Tags

These tags are used to set text heading sizes within your HTML documents.

### Image Tags

These tags are used to allow the insertion of images and client side image maps within your HTML documents.

### Link Tags

These tags are used to generate hypertext links within your HTML documents.

### List Tags

These tags are used to generate lists of information within your HTML documents.

### Logical Font Tags

These tags allow the style formatting of blocks of text within your HTML documents.

**Math Tags**

These tags allow mathematical typesetting within your HTML documents.

**Misc Tags**

These tags are used to set miscellaneous control elements within your HTML documents, as well as custom tags.

**Physical Font Tags**

These tags are used to change the physical font appearance of blocks of text within your HTML documents.

**Table Tags**

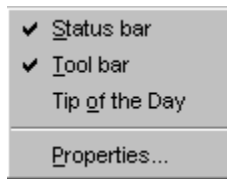
These tags are used to generate tables of information and images within your HTML documents.

**Time / Date**

Inserts the current time and date into your HTML document as text.

**For more information regarding HTML see the [overview](#)**

## Options Menu



### Status Bar

This menu check item allows you choose whether or not to display the status bar at the bottom of the ReVoL Web Worker.

### Tool Bar

This menu check item allows you choose whether or not to display the tool bar at the top of the ReVoL Web Worker.

### Tip Of The Day

Displays the tip of the day dialog box, which provides you with handy tips on successful HTML development, among other things.

### Properties

Displays the properties dialog box, used to set the default parameters for the ReVoL Web Worker.

## Tools Menu



### Add Minimal HTML

This allows you to insert the minimal HTML codes into a document in order to turn it into a web page, based on a series of templates

### Convert

This allows you to convert your current document to UNIX text, or convert a UNIX document to DOS text. UNIX documents use a linefeed character to end each line, whereas DOS documents use a carriage return and linefeed pair.

### Color Tags

This option will color all HTML code within your document, in your selected color.

### Page Statistic's

This option is only available when the [ReVoL Web View](#) mode is active. When selected it will display a dialog box containing statistically information relating to your current document.

### Repeat Last Tag

Repeats the last HTML tag inserted into the editor window.

### ReVoL Web Viewer

This activates the [ReVoL Web Viewer](#) integrated web browser.

### Strip HTML Codes

This allows you to remove all HTML codes from selected text within an editor window. Effectively turning a web page into a text only document.

### View With

This allows you to view your current document, in any external application that accepts a text based file as an input.

### Wizards

This gives you access to the [ReVoL wizards](#). Wizards guide you through a series of questions and input screens used to automate the creation of your web document, with the minimum of effort.

# The Hypertext Markup Language (HTML)

## What is HTML ?

HTML is a markup language that controls the structure of a web document's content as well as controlling its characteristics. HTML is a standardized language that is capable of being interpreted by a large number of varied browsers on many different platforms. HTML is a subset of a larger markup language known as SGML or Standard Generalized Markup Language. HTML allows you to control how you represent text as well as linking that text to various resources, such as sound files, graphics and other multimedia files. HTML allows different types of data to be displayed together, reinforcing the impact of the document.

A HTML document is really nothing more than a text file, with formatting codes. The HTML text file is made up of **content** (The text or information to be displayed or played back on the clients screen/speakers) and **markup** (The text codes to display, or to point to other information in need of display or playback).

In its most formal sense, HTML is a descriptive markup language that defines the structure and behavior of a document and allows the client to render each documents element in a particular way. HTML describes the structure, layout and behavior of a web document, and it is the basic mechanism for distributing information on the WWW.

When writing this help file I decided not to include a detailed examination of all the tags available within HTML and their uses (yet). Because there are plenty of good resources on the WWW regarding HTML development and these are constantly updated to include new idea's and methods. However I have included a very basic guide to the various tag levels .If you are completely new to all this I suggest that you buy one of the many great books available on HTML.

Other WWW great HTML resources which are available on the Internet can be accessed from the online guides menu of the ReVoL Web Viewer.

## Using the Tool Bar



The tool bar runs along the top of the screen and contains push buttons which display pop up menu's that correspond to the function of the button pressed. If you are unsure of a buttons function, place the mouse pointer over the button and a tool tip box will be displayed which tells you what the button is used for.



This button is used to open a new editor window.



This button is used to open an existing document.



This button is used to save the contents of the current editor window to a file.



These buttons are used to Cut or Copy selected text from an editor window to the windows clipboard, and then Paste it from the clipboard to an editor window.



This button is used to delete selected text.



This button is used to print the contents of an editor window.



These buttons are used to insert HTML code that control the Bold , Italic, or Underline, properties of text, within a HTML document.



This button is used to display the Math tags pop up menu.





This button is used to display the Break tags pop up menu.



This button is used to display the Document tags pop up menu.



This button is used to display the Form tags pop up menu.



This button is used to display the Heading tags pop up menu.



This button is used to display the Misc tags pop up menu.



This button is used to display the List tags pop up menu.



This button is used to display the Logical Fonts pop up menu.



This button is used to display the Block tags pop up menu.



This button is used to display the Physical Fonts pop up menu.



This button is used to display the Table tags pop up menu.



This button is used to display the Image tags pop up menu.



This button is used to display the Link tags pop up menu.

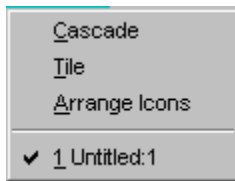


This button is used to launch your browser with the HTML document in the current window.



This button is used to launch the ReVoL Web Viewer integrated web browser.

## Window Menu



### **Cascade**

Cascades all open editor windows.

### **Tile**

Tiles all open editor windows.

### **Arrange Icons**

Arranges the position of minimized editor windows.

## Help Menu



### **Contents**

Displays the ReVoL Web Worker Help Contents.

### **Search For Help On**

Search for help on a specified topic.

### **How To Use Help**

Help on using help.

### **How To Register**

Displays registration information.

### **License Agreement**

Displays the ReVoL Web Worker license agreement.

### **About**

Displays the about screen.

